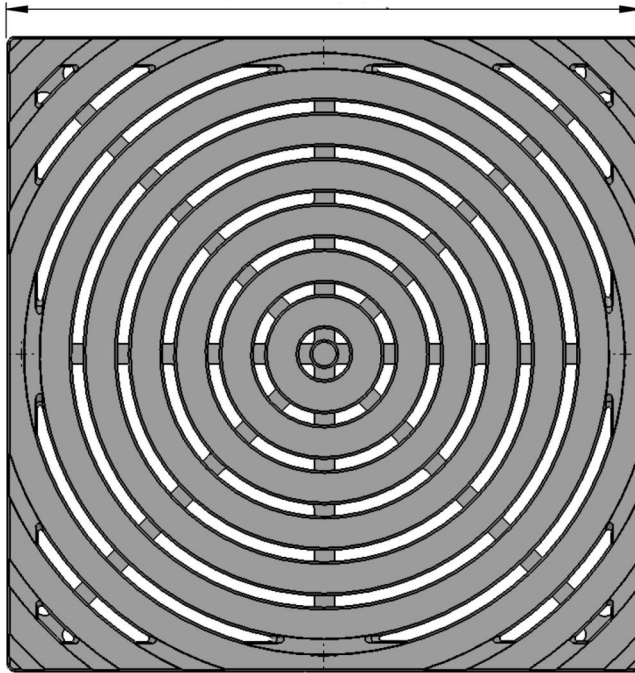
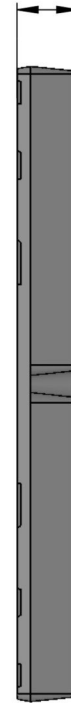


TOP

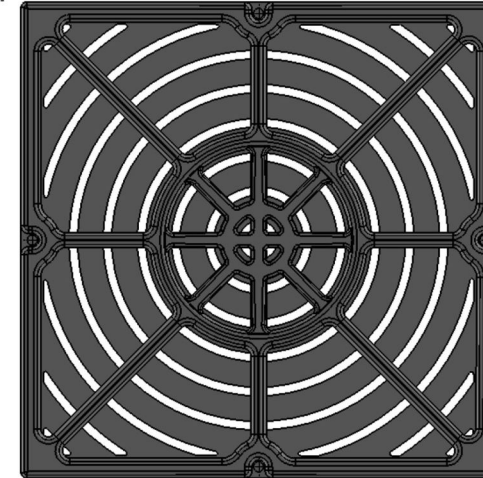
296.8625mm  
(11.6875") sq.



28.575mm  
(1.125")

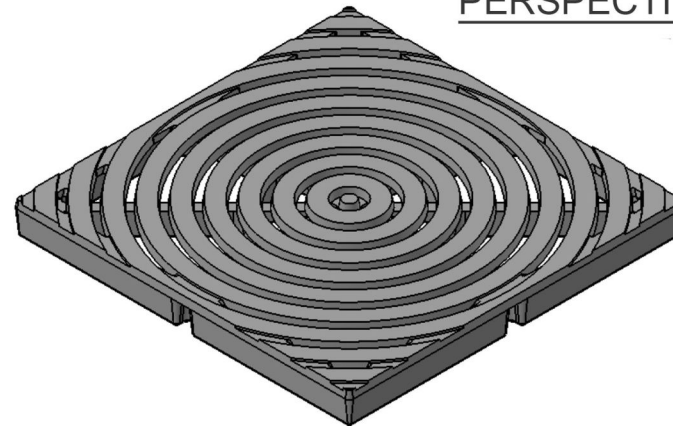


EDGE



BACK

PERSPECTIVE



SIDE

Pattern : Bullseye

Material : Cast Ductile Iron

**Bullseye 297mm Sq. Drain**

Bullseye 12"x12" Catch Basin Grate

Finish : Natural

Thickness : 28.575

Drawing no : BUL-SD-297

Product no : CI97-297SD

Dimensions : 296.863

Units : mm



Unit 5 Cotswold Business Park  
Millfield Lane  
Beds LU1 4AJ

Load Class : N/A

Flow rate : N/A

info@lateraldesignstudio.co.uk

0208 450 2244

1. Due to casting inconsistencies all dimensions are nominal
2. No openings greater than 6.35 mm
3. Weight 15 pounds
4. Please discuss about channel drain options