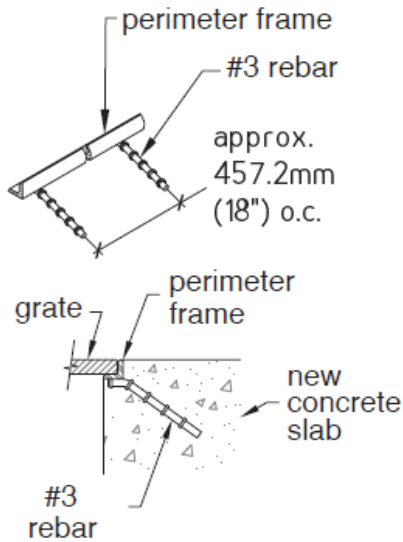
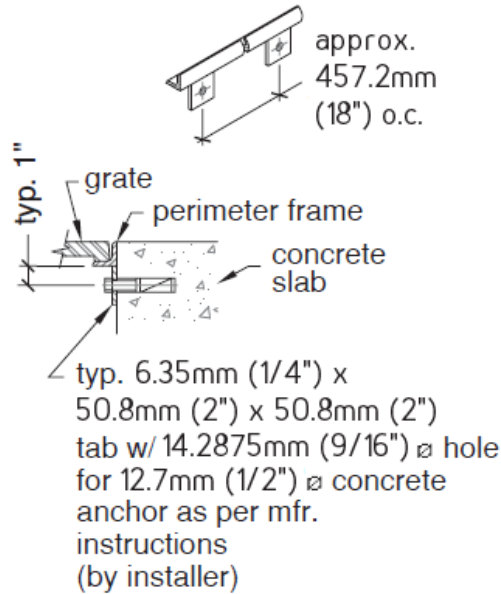


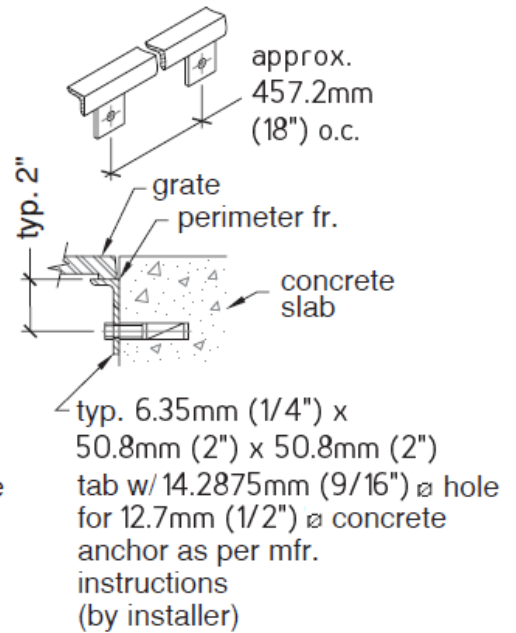
Frame Types



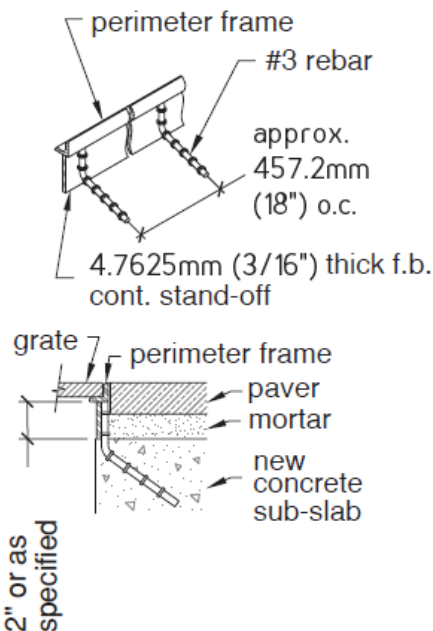
**"E"
EMBED**
used with new
surround slabs



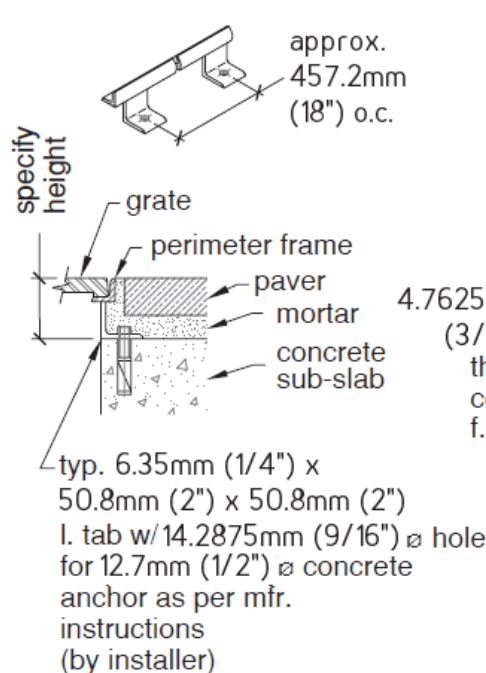
**"R"
RETRO TAB**
used with existing
surround slabs



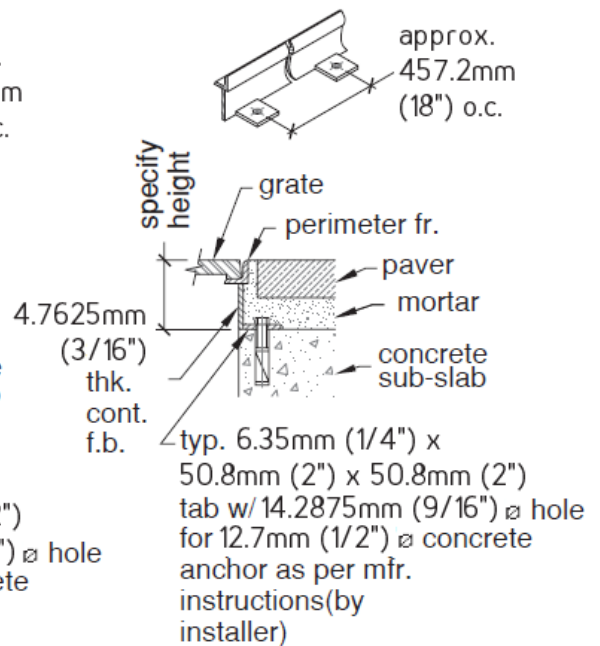
**"IR"
INVERTED RETRO TAB**
used with existing
surround slabs



**"SOE"
STAND-OFF EMBED**
used with pavers,
sand setting bed



**"SOR"
STAND-OFF RETRO TAB**
used with pavers,
grout setting bed



**"SOC"
STAND-OFF
RETRO CONTINUOUS**
used with pavers,
continuous skirt

